

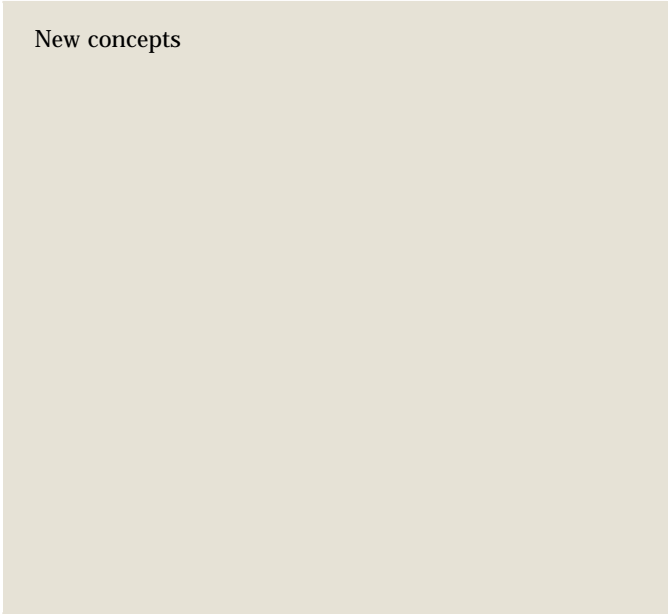
**k for up**

Received 16th April 2019,  
Accepted 16th July 2019

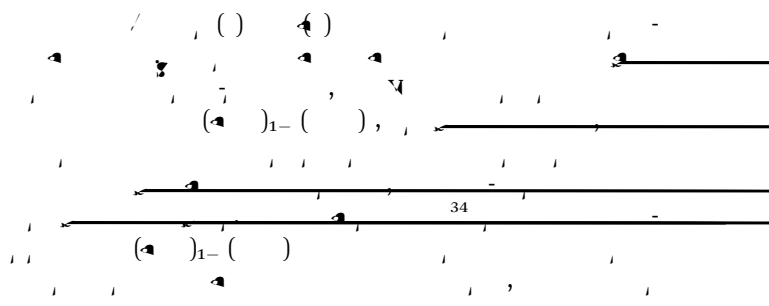
DOI: 10.1039/c9mh00574a

[rsc.li/materials-horizons](http://rsc.li/materials-horizons)

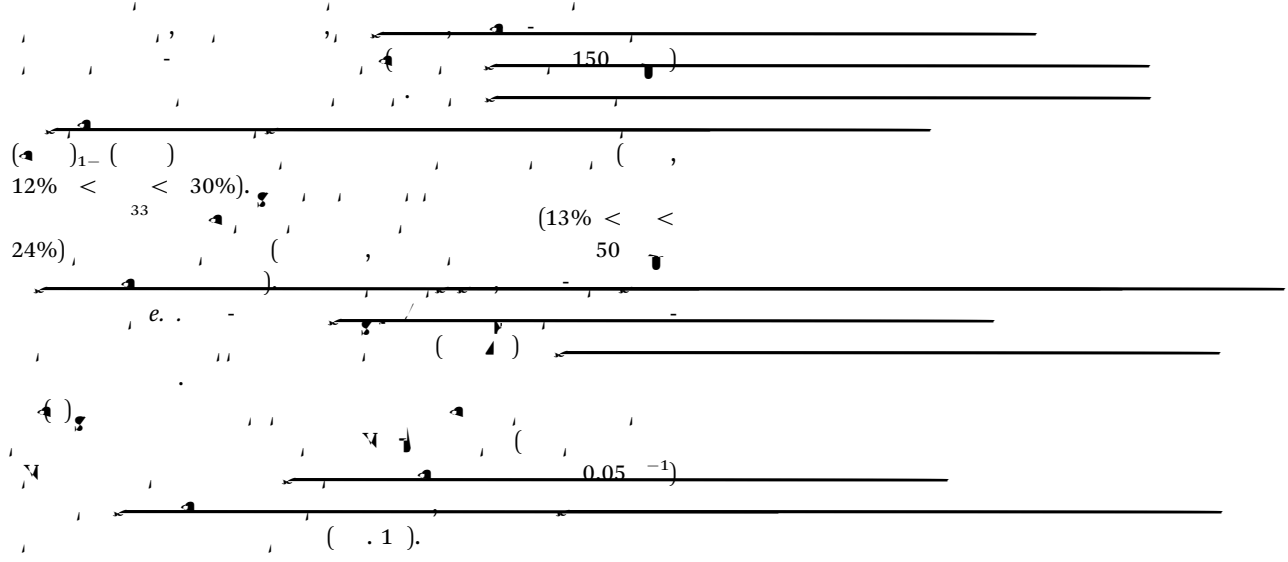
**New concepts**

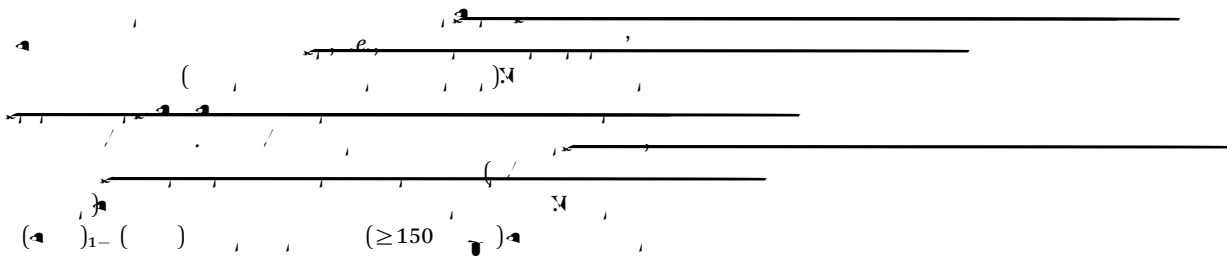






1, 1, 21, 23







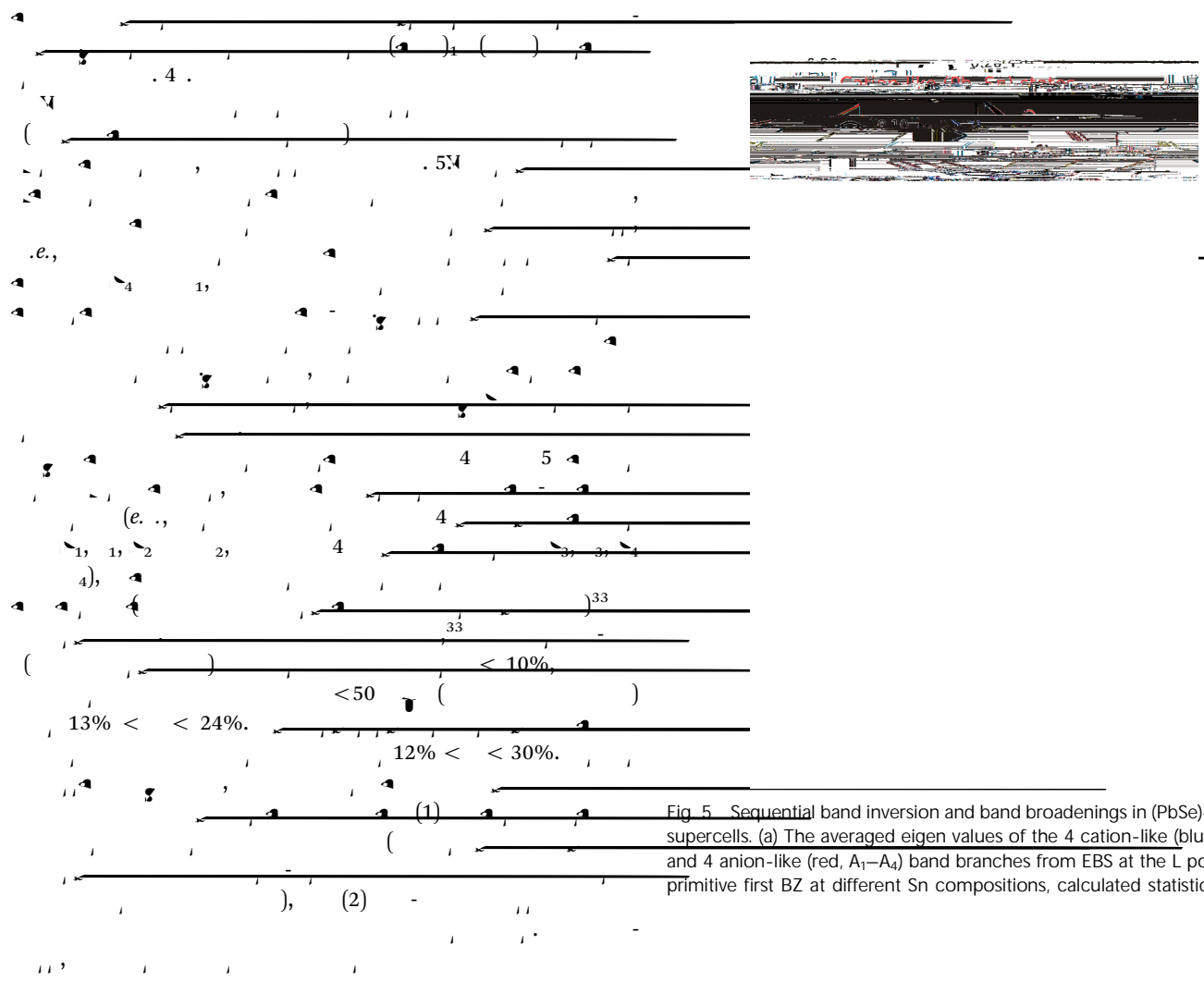
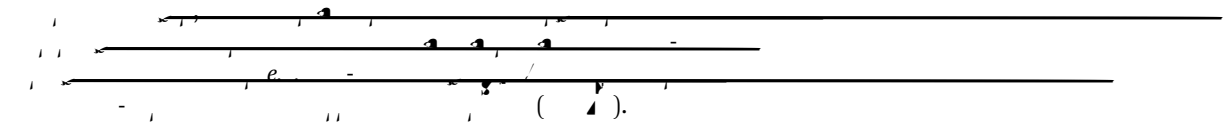
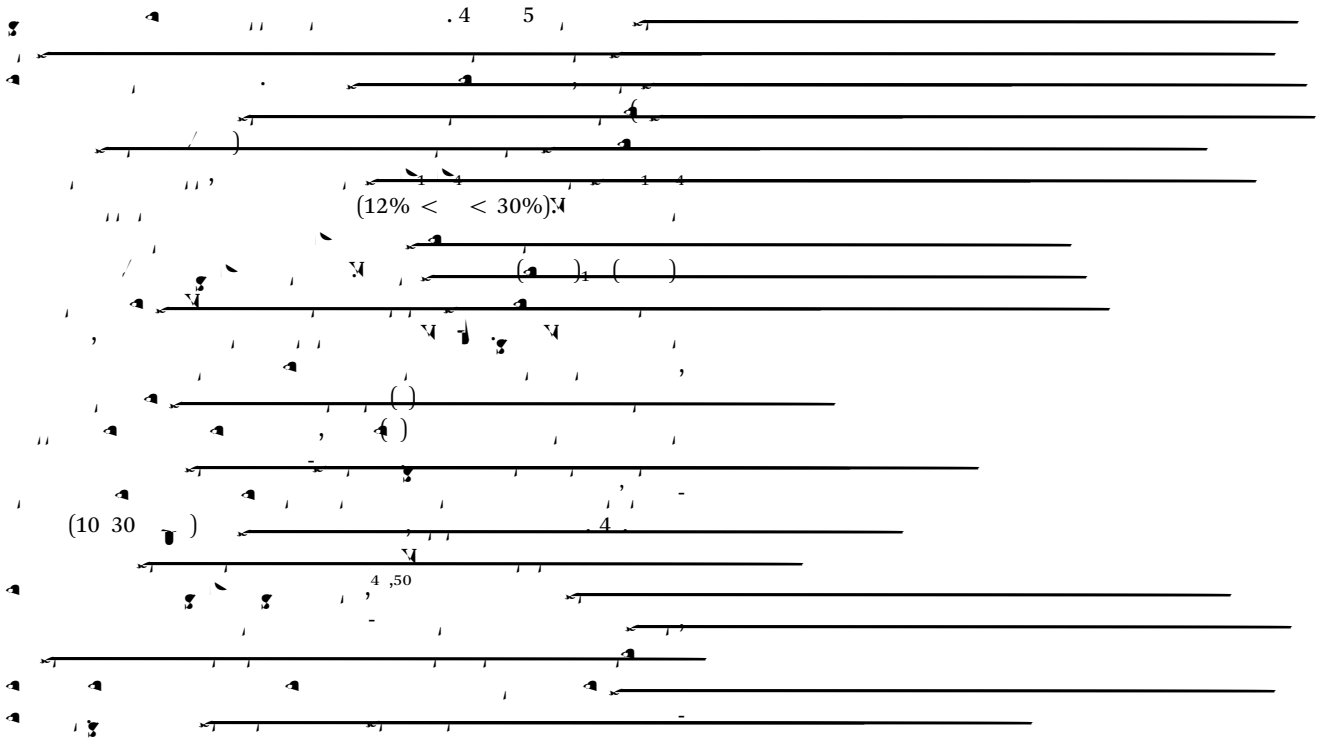
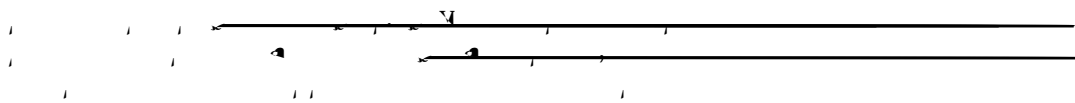


Fig. 5. Sequential band inversion and band broadenings in  $(\text{PbSe})_{1-x}(\text{SnSe})_x$  supercells. (a) The averaged eigen values of the 4 cation-like (blue,  $C_1-C_4$ ) and 4 anion-like (red,  $A_1-A_4$ ) band branches from EBS at the L point in the primitive first BZ at different Sn compositions, calculated statistically from



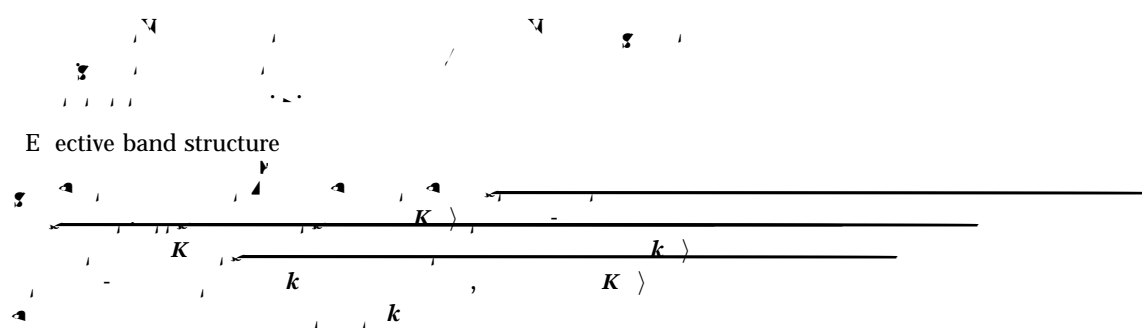
Broken inversion symmetry due to alloy disorder leads to WSM phase in the sequential band inversion regime











1. *Journal of Music Therapy*, 2013, 34(1), 14-14.

1. *Journal of Music Therapy*, 2014, 113(25), 403.

1. *Journal of Music Therapy*, 2014, 113(25), 403.